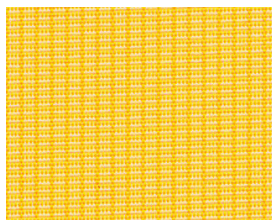
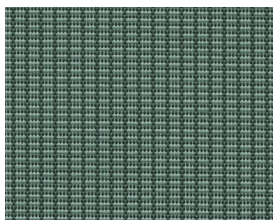


# WEBA®-PolySun Pro-2

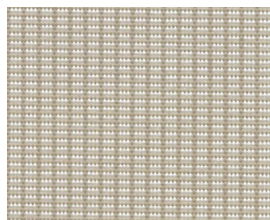
ca. 280 g/m<sup>2</sup>



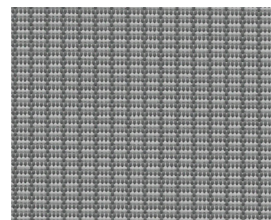
Gelb meliert 7009



Grün meliert 6002



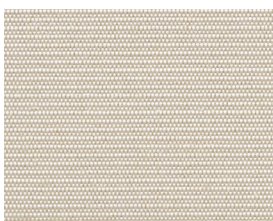
Beige meliert 9010



Grau meliert 9009



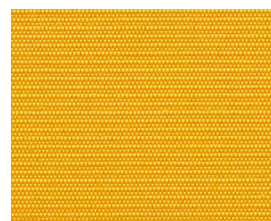
Weiß 9002



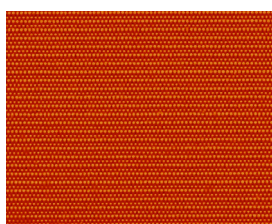
Beige 7002



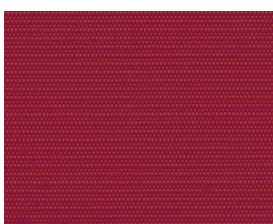
Champagner 7005



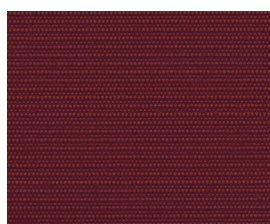
Gelb 7007



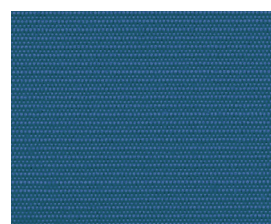
Orange 7008



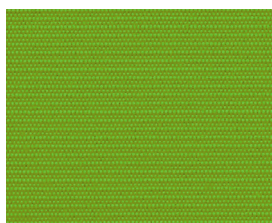
Rot 4002



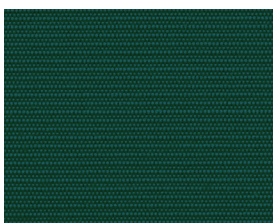
Bordeaux 4001



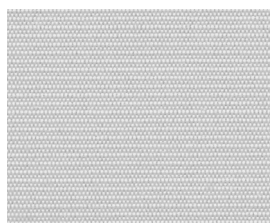
Blau 5001



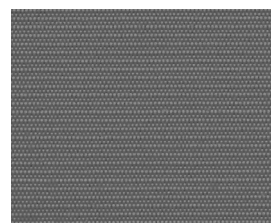
Hellgrün 6003



Moosgrün 6001



Silbergrau 9005



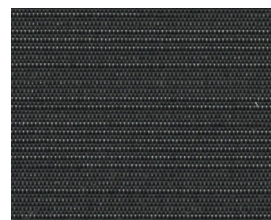
Dunkelgrau 9001

**Druck** Siebdruck

**Eigenschaften** Spinndüsengefärbte Markisenware aus 100% Polyester, ca. 280 g/m<sup>2</sup> / wasserdicht (Wassersäule > 1.000 mm) / schmutzabweisend und schimmelresistent / hohe Lichtechtheit (7) / UV Schutzfaktor 50+ (UPF) / FC-imprägniert und PU-beschichtet / selbstlöschend (FMVSS 302).

**Einsatz** Sonnenschirme: Gastro-Line / Zelt-Line / Pagode-Line / Trichter-Line

**Achtung** Farben sind nicht verbindlich, dieser Ausdruck / PDF dient nur zur Orientierung. Gerne senden wir Ihnen nach Auswahl ein Original-Stoffmuster zu.



Anthrazit 9007